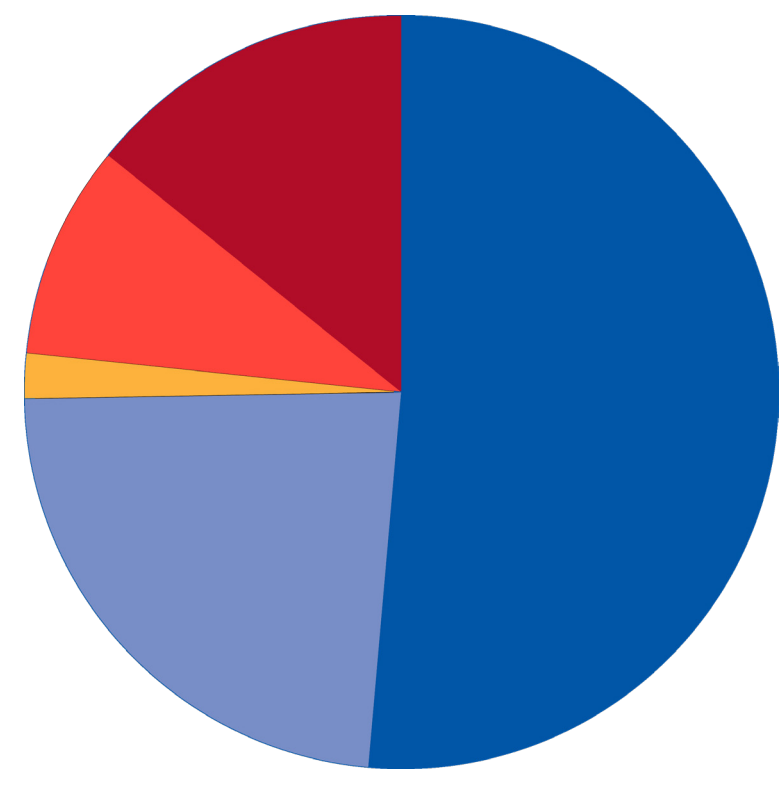


UNITED WE SUCCEED

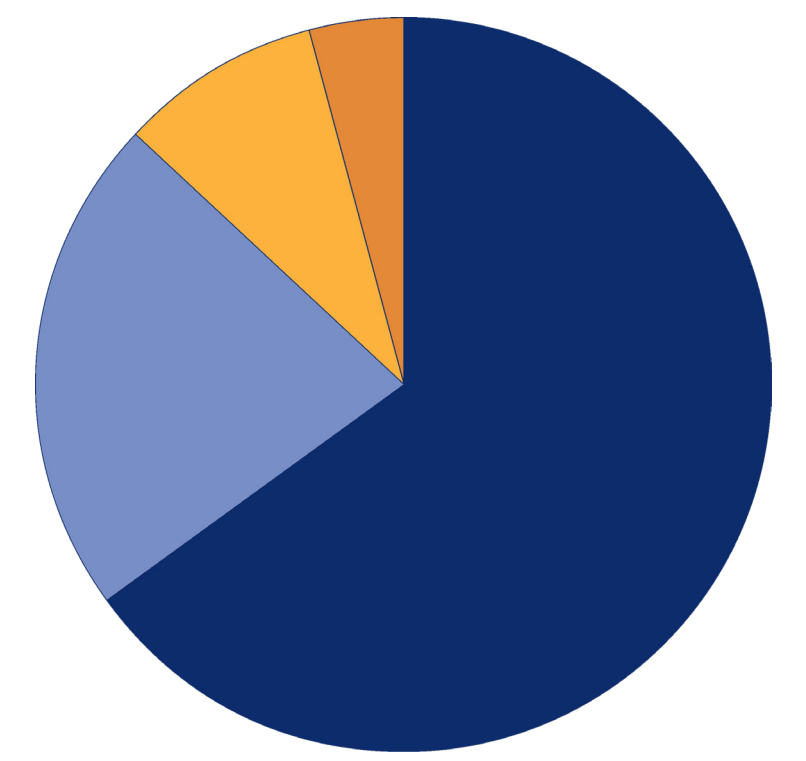
REVENUE – \$3.2M

- 53.1% Individuals (\$1.7M)
- 21.9% Corporations (\$0.7M)
- 6.3% Foundations & Government (\$0.2M)
- 12.5% Other Public Support (\$0.4M)
- 6.3% Other (\$0.2M)



COMMUNITY INVESTMENTS & EXPENDITURES – \$3.5M

- 60% Community Impact Investments (\$2.1M)
- 26% United Way Programs & Initiatives (\$0.9M)
- 11% Fund Development (\$0.4M)
- 3% Management & General (\$0.1M)



86% of all donations are used to change lives and save lives in Southwest Alabama through our programs and local agencies in Choctaw, Clarke, Mobile, and Washington Counties.

WHAT A DOLLAR BUYS.

Impact based on a \$10 donation



\$700 in healthcare can be provided to low-income, uninsured individuals and families



50 pounds of food is available to those in need in our community

Impact based on \$50 donation



2.5 hours of in-home support are available for individuals with developmental disabilities and their families



1.5 hours of respite services can be provided for a family needing time for themselves or in the event of an emergency



1.5 days of early learning services are available for children from low-income, working families

Impact based on \$150 donation



3 adults can receive instructional materials to learn how to read



1 individual seeking to reenter the workforce can be provided job readiness and job search instruction

Impact based on \$250 donation



2 children are able to receive weekend food for an entire school year



1.3 months of mentoring are available to keep high school teenagers in school working towards a promising future

WAYS TO GIVE

1 DIRECT TO UWSWA FOR INVESTMENT

2 DIRECT TO PARTNER AGENCY

3 DIRECT TO ANY 501(C)(3)

HOW WE INVEST

1 DIRECT TO UWSWA FOR ALLOCATIONS
\$1,206,745

invested in our partner agencies to support their programs through the Volunteer Allocations Committee

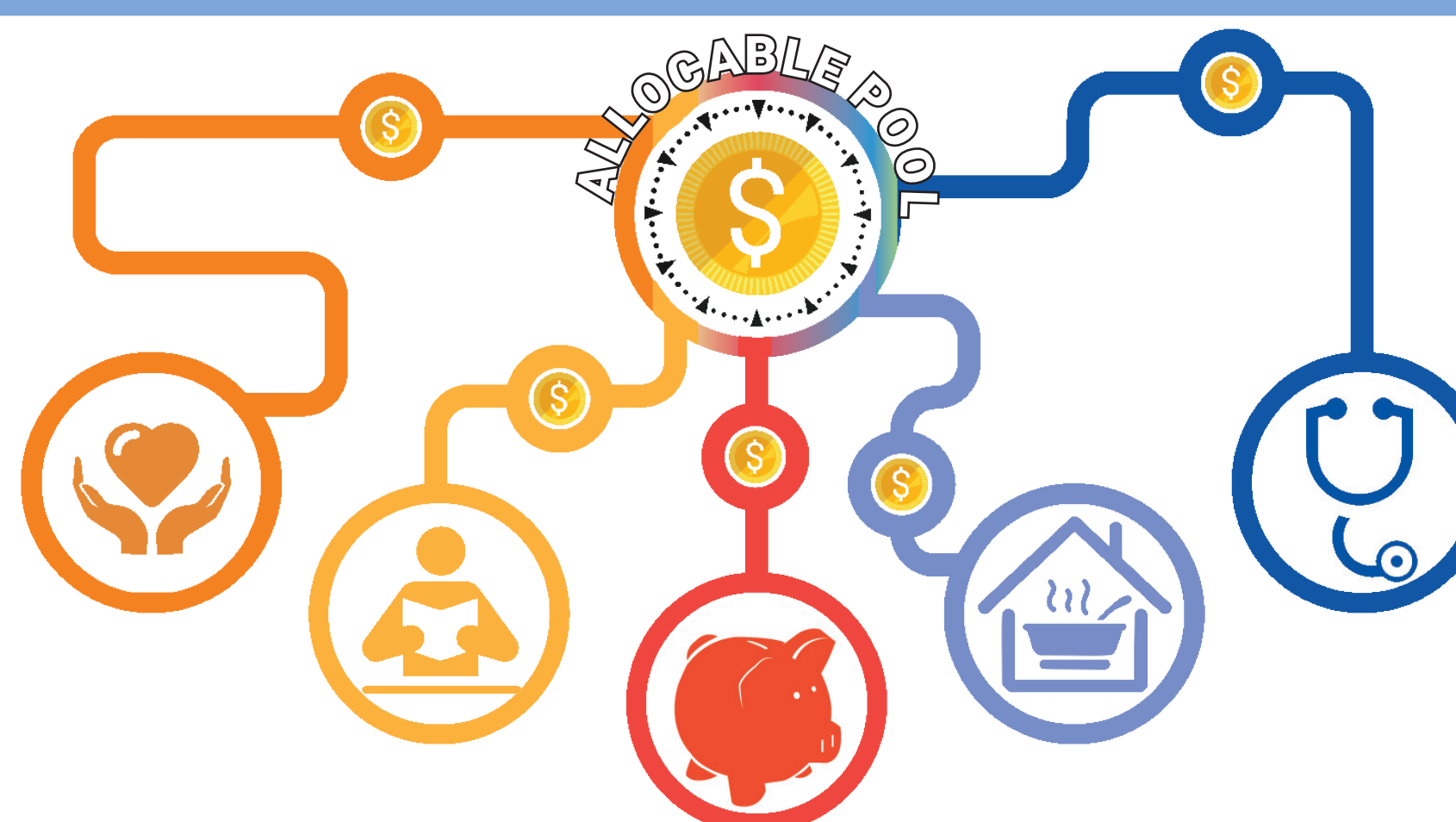
2 DIRECT TO UWSWA FOR PROGRAMS
\$10,300

invested in UWSWA Internal Programs

3 DESIGNATIONS PARTNER AGENCIES & OTHER 501(C)(3)
\$166,937

designated dollars were disbursed to UWSWA partner agencies and other verified 501(c)(3) agencies

ALLOCATIONS



UWSWA PARTNER AGENCIES APPLY FOR FUNDING

COMMUNITY VOLUNTEERS MAKE UP THE ALLOCATIONS' COMMITTEE

ALLOCATIONS' COMMITTEE REVIEWS THE AGENCY APPLICATIONS AND RECOMMENDS FUNDING LEVELS

UWSWA VOLUNTEER BOARD OF TRUSTEES REVIEW THE ALLOCATIONS' COMMITTEE'S RECOMMENDATIONS AND VOTE TO APPROVE FINAL FUNDING LEVELS

UWSWA PARTNER AGENCIES RECEIVE THEIR ALLOCATIONS MONTHLY, BEGINNING AT THE START OF THE NEW FISCAL YEAR

UNITED WE SUCCEED

BUILDING BLOCKS FOR A BETTER LIFE

ESSENTIALS



EDUCATION



HEALTH



FINANCIAL STABILITY



UWSWA SERVICE AREA

Choctaw

- 12 partner agencies
- \$15,600 in funding
- 3,078 people served

Clarke

- 26 partner agencies
- \$34,597 in funding
- 10,899 people served

Mobile

- 39 partner agencies
- \$1,427,128 in funding
- 155,140 people served

Washington

- 29 partner agencies
- \$82,124 in funding
- 6,474 people served

UWSWA PARTNER AGENCIES

◆ Choctaw County | ◆ Clarke County | ◆ Mobile County | ◆ Washington County

AIDS Alabama South, LLC
 Alpha Women's Resource Center
 American Red Cross Serving South Alabama
 The Arc of Clarke County, Inc.
 The Arc of Southwest Alabama
 Big Brothers Big Sisters of South Alabama, Inc.
 Boys & Girls Clubs of South Alabama
 Boys & Girls Club of Southwest Alabama (Thomasville)
 Catholic Social Services Archdiocese of Mobile
 The Child Advocacy Center, Inc.
 Community Action Agency of South Alabama
 CASA Mobile, Inc. - Court Appointed Special Advocate
 Crittenton Youth Services, Inc.
 Dearborn YMCA
 Drug Education Council, Inc.
 Dumas Wesley Community Center
 Epilepsy Foundation Alabama, Mobile & Gulf Coast Chapter
 Family Promise of Coastal Alabama, Inc.
 Feeding the Gulf Coast
 Franklin Primary Health Center, Inc.
 Goodwill Gulf Coast
 Gulf Regional Early Childhood Services
 Home of Grace for Women
 Housing First, Inc.

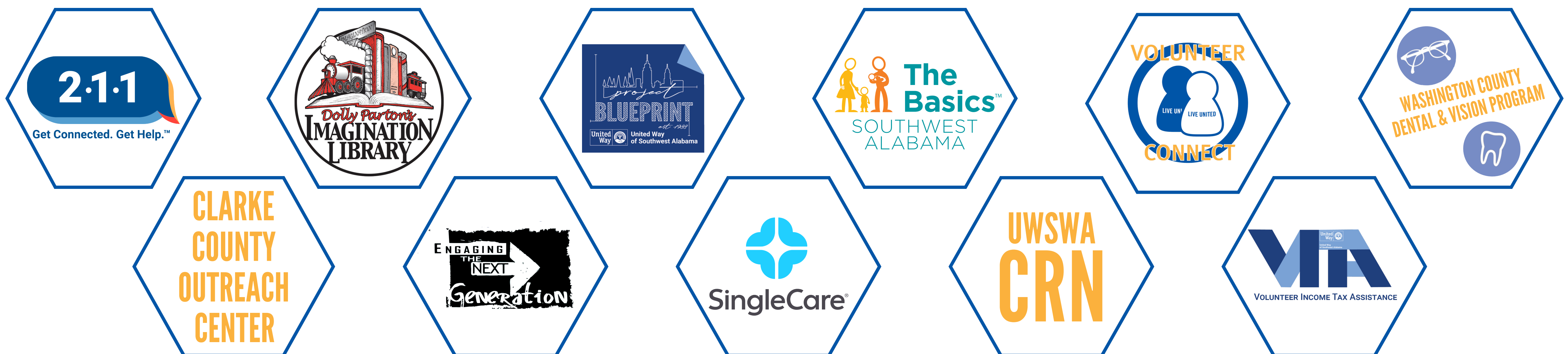
◆◆◆ The Learning Tree, Inc. ◆◆◆
 ◆◆◆ Lifelines Counseling Services ◆◆◆
 ◆◆◆ McKemie Place ◆◆◆
 ◆◆◆ Mobile Area Education Foundation ◆◆◆
 ◆◆◆ Mobile Community Action, Inc. ◆◆◆
 ◆◆◆ Mulherin Custodial Home, Inc. ◆◆◆
 ◆◆◆ Ozanam Charitable Pharmacy ◆◆◆
 ◆◆◆ Penelope House, Inc. ◆◆◆
 ◆◆◆ Regional Child Advocacy Center, Inc. (Grove Hill) ◆◆◆
 ◆◆◆ Ronald McDonald House Charities of Mobile ◆◆◆
 ◆◆◆ The Salvation Army of Coastal Alabama ◆◆◆
 ◆◆◆ Sickle Cell Disease Association of America, Mobile Chapter ◆◆◆
 ◆◆◆ South Alabama Volunteer Lawyers Program ◆◆◆
 ◆◆◆ Southwest Alabama Retired & Senior Volunteer Program (RSVP) (Thomasville) ◆◆◆
 ◆◆◆ United Cerebral Palsy of Mobile, Inc. ◆◆◆
 ◆◆◆ Via Health, Fitness, & Enrichment Center ◆◆◆
 ◆◆◆ Victory Health Partners, Inc. ◆◆◆
 ◆◆◆ Volunteers of America Southeast, Inc. (VOASE) ◆◆◆
 ◆◆◆ Wilmer Hall Children's Home ◆◆◆
 ◆◆◆ YMCA of South Alabama ◆◆◆



United Way of Southwest Alabama

CHANGE LIVES. SAVE LIVES

UWSWA INITIATIVES



UNITED WAY 2-1-1

Since its creation in 2007, United Way's 2-1-1 Help Line has been the nation's premier referral resource for people seeking health and human services information. Locally, through a UWSWA partnership with Lifelines Counseling Services, trained and caring call specialists provide direct access to free and confidential referrals to community services for individuals seeking assistance.

Community Impact Statistics

- 2022-23 United Way 2-1-1 received 13,964 calls
- Call specialists provided 27,985 referrals to service providers

CLARKE COUNTY OUTREACH CENTER

The Clarke County Outreach Center (CCOC) is a central hub for UWSWA partner agencies and other nonprofits serving Clarke County to meet and provide their full spectrum of services to residents of the county. Having a physical presence in Clarke County helps mitigate challenges as well as increase awareness of the programs and services available to residents. The CCOC was made possible through an Alabama Power Foundation Elevate Grant and the J.L. Bedsole Foundation.

2022-23 Community Impact Statistics

- 2 local nonprofit agencies utilized the outreach center to provide services to their clients

DOLLY PARTON IMAGINATION LIBRARY

Dolly Parton's Imagination Library (DPIL) is a book gifting program that mails high-quality books to children for free from birth to age five, regardless of their families' incomes. DPIL was designed to encourage reading to preschool children. Each month after a child is registered – until their fifth birthday – a carefully selected, age-appropriate book is sent to the child's home.

2022-23 Community Impact Statistics

- 2,661 children participated in DPIL in 2022-23
- UWSWA distributed 2,800 books to children

ENGAGING THE NEXT GENERATION

Engaging the Next Generation is a collaborative program established in 2008 by Mobile United and Mobile County Commissioner Merceria Ludgood- District 1 to showcase nonprofit organizations in the Mobile area and connect them with the innovators of the next generation. In 2019, UWSWA accepted program management and planning in combination with our Emerging Leaders Affinity Group.

Community Impact Statistics

- 33 local nonprofit agencies provided information about volunteer opportunities to attendees.
- 64 individuals attended the event.

PROJECT BLUEPRINT

Project Blueprint (PBP) is an initiative of UWSWA designed to assist partner agencies and other nonprofit organizations to become more inclusive and reflective of our diverse community. Upon completion of a series of informative classes, PBP graduates are trained and available for placement on local nonprofit boards and committees.

PBP graduates currently serve at all levels of UWSWA such as Board of Trustees, the Allocations Committee, and special projects like Day of Caring. Local businesses and nonprofit agencies benefit from these volunteers, as do a majority of the United Way of Southwest Alabama agencies.

2022-23 Community Impact Statistics

- 7 individuals graduated from the program
- 50 volunteer hours provided by the host sites for \$1,419 in economic impact

SINGLECARE - FORMERLY FAMILYWIZE

SingleCare, a free prescription savings service and discount card, can save individuals up to 80% on medications at most major pharmacies. SingleCare is always free to use and works whether you have insurance or not, because everyone should have access to the lowest prices available for their medications. SingleCare is valid at more than 35,000 pharmacies in the United States including CVS, Walmart, Walgreens, Albertsons, Kroger, H-E-B, Hy-Vee, and Wegmans.

2022-23 Community Impact Statistics

- 16,359 individuals used SingleCare to save on their prescriptions
- Individuals saved over \$1,676,038 using SingleCare

THE BASICS

The Basics Strategy is a population-level initiative to enhance the development of children ages birth to three by providing information, social supports, and regular reminders to parents and caregivers to apply The Basics Principles and related practices for early childhood caregiving.

2022-23 Community Impact Statistics

- 5,831 caregiver and children served through the program
- 287 participated in the The Basic Trainings and Workshops

UNITED WAY OF SOUTHWEST ALABAMA COMMUNITY RESOURCE NETWORK

The Community Resource Network (CRN), which began in March 2020 in response to the Covid-19 Pandemic, is a partnership between UWSWA, the University of South Alabama Office of Community Engagement, Spring Hill College's Albert S. Foley, S.J. Community Service Center, and other local nonprofits in Choctaw, Clarke, Mobile, and Washington Counties. Members of the network meet regularly to share resources with all organizations that need information or assistance. Members are part of an email List-Serv to maintain ongoing communications.

2022-23 Community Impact Statistics

- 1,112 nonprofit agencies participate in the Community Resource Network
- In 2022-23, CRN hosted 6 meetings

VOLUNTEER CONNECT

Volunteer Connect (VC) inspires volunteerism and challenges the community to serve. UWSWA educates people about the importance of volunteering and the life changing contributions made by volunteers. Through the VC database, UWSWA joins people who want to volunteer with the right opportunities to serve. Opportunities range from one-time needs, special events, service hours, to ongoing needs.

2022-23 Community Impact Statistics

- 4,194 volunteers registered in Volunteer Connect
- Volunteers gave 1,186 hours of service to UWSWA partners and other local nonprofit agencies
- Volunteer hours equal \$33,658 in economic impact in Southwest Alabama

VOLUNTEER INCOME TAX ASSISTANCE PROGRAM (VITA)

The IRS's Volunteer Income Tax Assistance (VITA) Program offers free basic tax return preparation to qualified individuals who need assistance in preparing their own tax returns including: people who generally make \$60,000 or less; persons with disabilities; and limited English-speaking taxpayers.

All VITA volunteers who prepare returns must take and pass tax law training that meets or exceeds IRS standards. This training includes maintaining the privacy and confidentiality of all taxpayer information. In addition to requiring volunteers to certify their knowledge of the tax laws, the IRS requires a quality review check for every return prepared at a VITA site prior to filing.

2022-23 Community Impact Statistics

- UWSWA completed 1,080 2022 tax returns which resulted in \$1,053,965 returned to the local economy through tax refunds and tax credits
- The SAFE Coalition completed 2,619 returns which resulted in \$3,059,232 returned to the local economy through tax refunds and tax credits

WASHINGTON COUNTY DENTAL & VISION PROGRAM

The Washington County Dental and Vision Program provides limited dental and vision care for residents of Washington County who meet specific requirements.

The Dental Program will cover a maximum of \$750 per year per patient. The Vision Program will cover a maximum of \$300 per year for youth up to the age of 19 and a maximum of \$450 per year for adults.

2022-23 Community Impact Statistics

- UWSWA supported one qualifying resident with dental service.
- UWSWA provided \$1,700 in financial support



United Way of Southwest Alabama
218 St. Francis Street • Mobile, Alabama • 36602
251.433.3624 • www.uwswa.org

United Way
of Southwest Alabama

CHANGE LIVES. SAVE LIVES.

COMMUNITY COLLABORATIONS

Alabama Power Foundation

Alabama State Building & Construction Trades Council

Alabama Volunteer Organizations Active in Disasters (ALVOAD)

Cumulus Cares

Domestic Violence Task Force Mobile County

Domestic Violence Task Force Washington County

Mobile Arts Council

Mobile County Volunteers Organizations Active In Disasters (MCVOAD)

Mobile Pensacola Building & Construction Trades Council

Mobile United

Project Thrive

South Alabama Coalition of Nonprofits

Southwest Alabama Labor Council, AFL-CIO

UA Plumbers & Pipefitters Local 119

United Steelworkers - Women of Steel

United Way Community Resource Network

- AARP Alabama
- Accell Academy
- AETNA
- Alabama Career Center
- Alabama Coalition for Immigrant Justice
- Alabama Department of Public Health (ADHP)
- Alabama Department of Rehabilitation Services, Children's Rehabilitation
- Alabama Food Banks
- Alabama Possible
- Alabama Power
- Alabama West Florida United Methodist Conference
- Ascension Health
- Atlas Outsourcing
- Boat People SOS
- Bayou Clinic
- Better Business Bureau
- Bradford Health
- Center for Fair Housing
- Central Presbyterian Church Food Pantry
- Chickasaw City Schools
- Choctaw County Commission
- Choctaw County Health Department
- Choctaw County Department of Human Resources
- Cindy Haber Center
- City of Mobile
- Clarke County Commission
- Clarke County Health Department
- Clarke County Department of Human Resources
- Church World Service
- Coastal Alabama Community College
- East Coast Migrant Head Start Program
- Enroll Mobile
- Federal Emergency Management Agency (FEMA)
- Fostering Together
- Girl Scouts of Southern Alabama

- Governor's Office of Volunteer Services
 - Gulf Coast Family Center
 - Gulf Coast Mental Health Coalition
 - HIPPY
 - Independent Learning Center
 - LARCHE Mobile
 - Legal Services of Alabama
 - Mennonite Disaster Services
 - Mercy for Life
 - Mobile Area Council Boy Scouts of America
 - Mobile Baptist Association
 - Mobile County Commission
 - Mobile County District Attorney's Office
 - Mobile County EMA
 - Mobile County Health Department (MCHD)
 - Mobile County Department of Human Resources
 - Mobile County Public School System
 - Mobile Parks and Recreation Department
 - Mobile Public Library
 - Mobile United
 - Oak Street Health
 - Passage USA
 - People Engaged in Recovery (PEIR)
 - Prism United
 - Project Thrive
 - Pure Life RX
 - Regional Autism Network
 - Saraland City Schools
 - Satsuma City Schools
 - Scanland Consulting
 - Sisters of Mercy
 - South Alabama Center for Fair Housing
 - South Alabama Regional Planning Commission
 - Southwest Alabama Partnership for Training & Employment (SWAPTE)
 - Springboard
 - Spring Hill College
 - St. Vincent de Paul Disaster Group
 - Taking it by Force
 - The Bridge, Inc.
 - United Methodist Inner City Mission
 - University of South Alabama
 - Veterans Association
 - Veterans Recovery Services
 - Washington County Commission
 - Washington County Extension Office
 - Washington County Health Department
 - Washington County Department of Human Resources
 - Waterfront Mission
 - and 46 UWSWA partner agencies
- United Way Worldwide**
United Ways of Alabama
Washington County Local Emergency Planning Committee (LEPC)

DIAL 2-1-1

UNITED WAY 2-1-1 PROVIDES FREE, CONFIDENTIAL, 24/7 REFERRALS FOR

BASIC HUMAN NEEDS

- Food
- Clothing
- Shelter
- Rent assistance
- Utility assistance

PHYSICAL & MENTAL HEALTH

- Health insurance programs
- Medicaid & Medicare
- Intervention services
- Support groups
- Counseling
- Drug & alcohol intervention
- Victims' services
- Rehabilitation

EMPLOYMENT SUPPORT

- Earned Income Tax Credit (EITC)
- Financial assistance
- Job training
- Transportation assistance
- Education programs

SUPPORT FOR SENIOR CITIZENS

- Adult day care
- Respite care
- Home health care
- Transportation
- Specialized services for both young & old with disabilities
- Employment assistance

SUPPORT FOR CHILDREN, YOUTH, & FAMILIES

- Child care
- After-school programs
- Family resource centers
- Mentoring
- Tutoring
- Protective services

GET HELP DURING A DISASTER

**DURING A DISASTER SUCH
AS A HURRICANE, TORNADO, FIRE,
OR FLOOD, A 2-1-1 CALL SPECIALIST
LINKS THE CALLER TO**

- Emergency shelters
- Grief counseling
- Food distribution centers
- Clean-up crews
- State & federal assistance
- Potable water, ice, food
- Volunteer opportunities
- Emergency financial assistance



Dial 2-1-1 or toll free
1-888-421-1266
or search the database online at
www.211connectsalabama.org

2-1-1

Get Connected. Get Help.™

United
Way



United Way
of Southwest Alabama